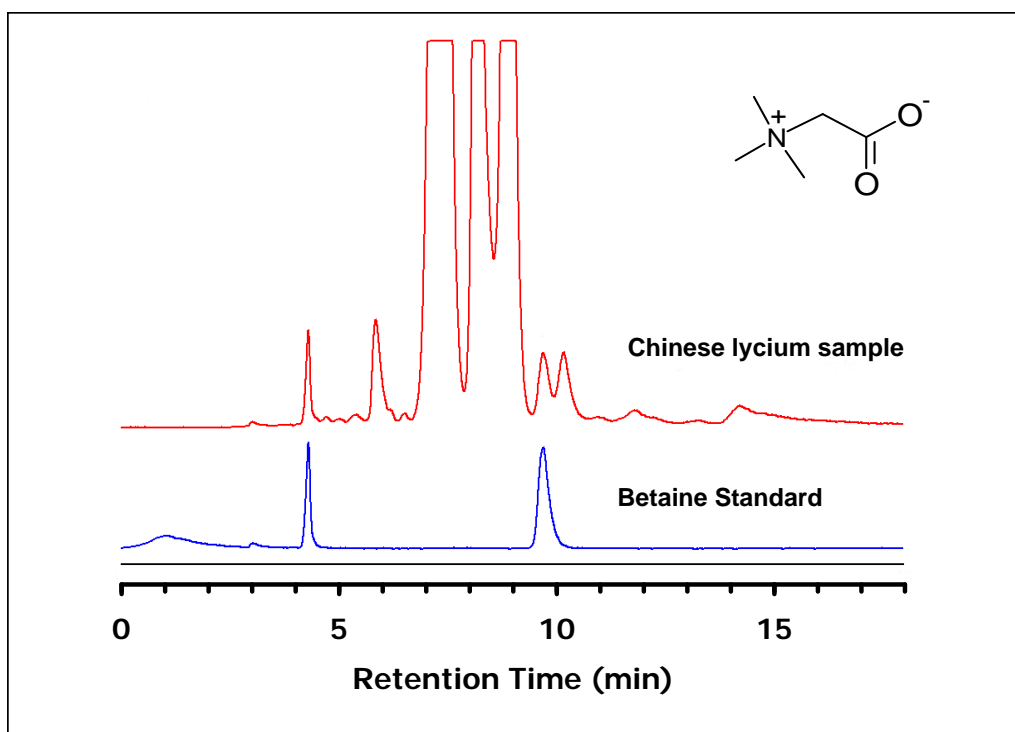


ZIC[®]-HILIC Separation of Betaine from Chinese Lycium

Chromatographic Conditions

Column: ZIC[®]-HILIC, PEEK 250 x 4.6 mm, 5 μm, 200 Å (P/N 2712-255)
 Injection: 20 μL raw sample diluted by 50% in water
 Detection: ELSD (neb=40°C, evap=30°C, gas=1.6 SLM)
 Flow Rate: 1.0 mL/min
 Mobile Phase (v/v): 75%, Methanol
 25%, Ammonium Acetate 10 mM, pH 6.0
 (total ionic strength 2.5 mM)



Chromatographic Data

No.	Compound	Time (min)	Retention factor
	t_0 void volume	2.5	-
1	Betaine	10.4	3.2

More information can be found at: www.polymerlabs.com//technical_bulletins/TB1074

Quantification of Betaine in Chinese Lycium using HILIC and Evaporative Light Scattering Detection