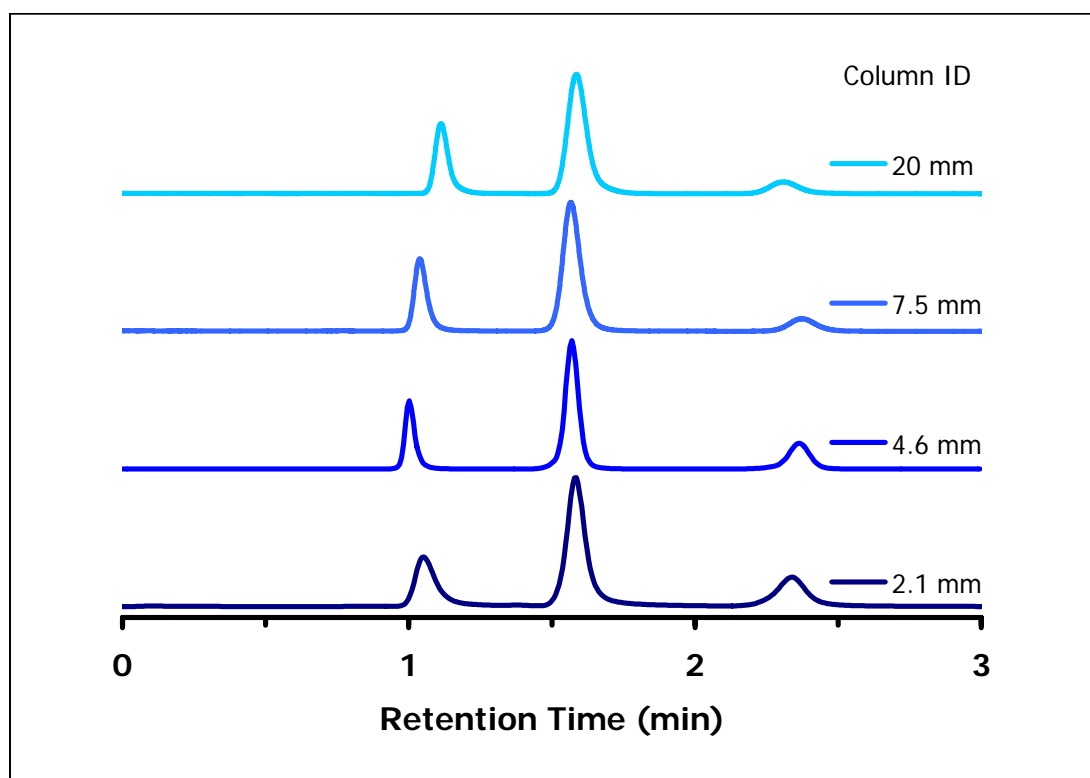


## Scalability of Separations on the ZIC<sup>®</sup>-HILIC Column

### Chromatographic Conditions

Columns: ZIC<sup>®</sup>-HILIC, PEEK 50 x 2.1 mm, 5 μm, 200 Å (P/N 2712-052)  
 ZIC<sup>®</sup>-HILIC, PEEK 50 x 4.6 mm, 5 μm, 200 Å (P/N 2712-055)  
 ZIC<sup>®</sup>-HILIC, PEEK 50 x 7.5 mm, 5 μm, 200 Å (P/N 2712-058)  
 ZIC<sup>®</sup>-HILIC, SS 50 x 20 mm, 10 μm, 200 Å (P/N 2932-621)

Injection: 1, 5, 20, 100 μL in mobile phase  
 Detection: UV @ 254 nm (UFS 1.0 V)  
 Pressure Drop: 1.0, 1.0, 0.8, 1.1 MPa (144, 144, 115, 158 psi)  
 Flow Rate: 0.1, 0.5, 1.3, 9.3 mL/min  
 Mobile Phase (v/v): 80%, Acetonitrile  
 20%, Ammonium Acetate 5 mM



### Chromatographic Data (4.6 mm ID column)

No.	Compound		Time (min)	Retention factor	Resolution
1	Toluene	void volume ( $t_0$ )	1.0	-	-
2	Uracil		1.5	0.56	7.1
5	Cytosine		2.4	1.46	6.9